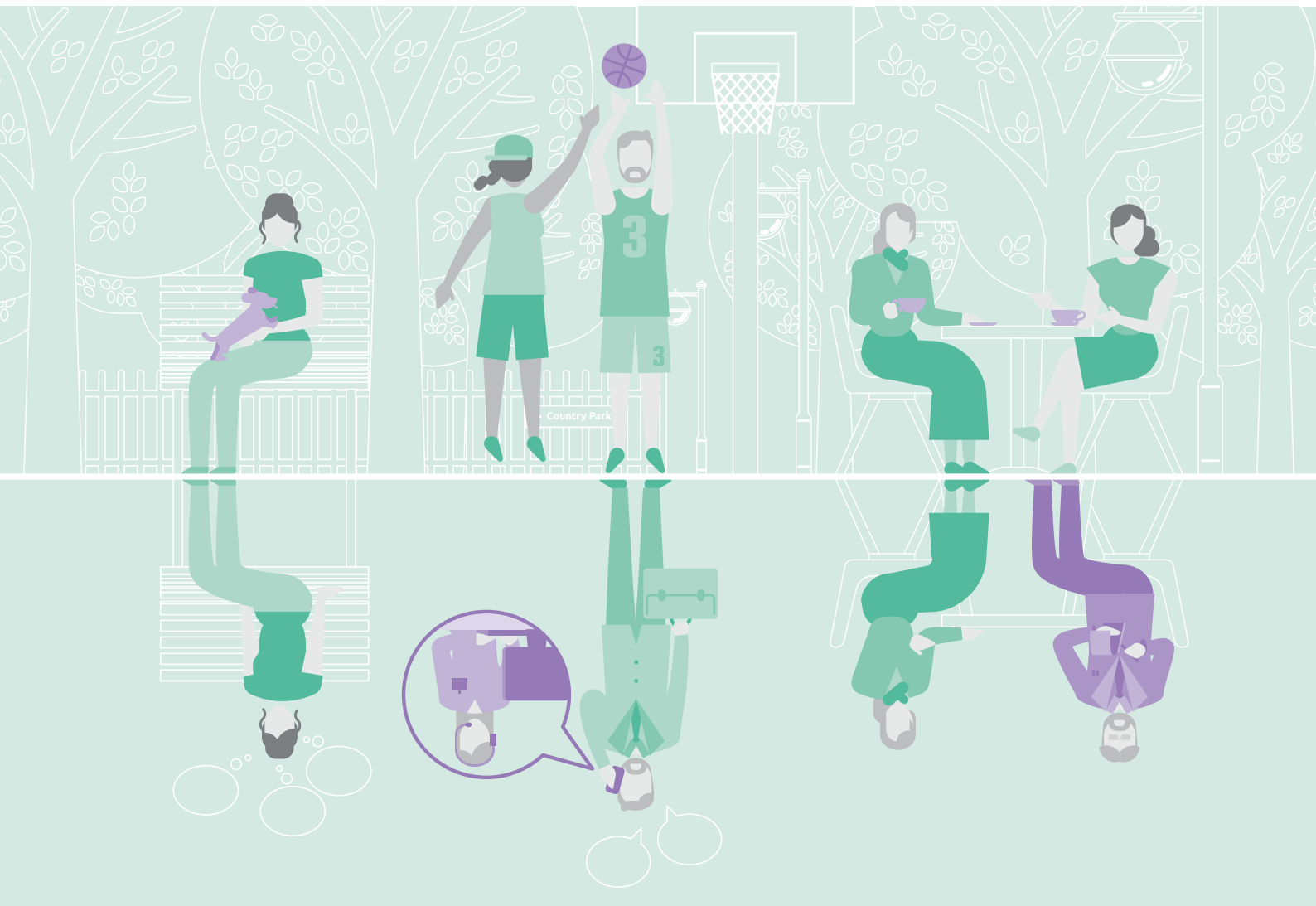


Changes to Somerset's mental health hospitals



Our vision

We would like to make some changes to mental health hospitals in Somerset.

We are Somerset Clinical Commissioning Group. Our job is to buy and plan health services for the people of Somerset.

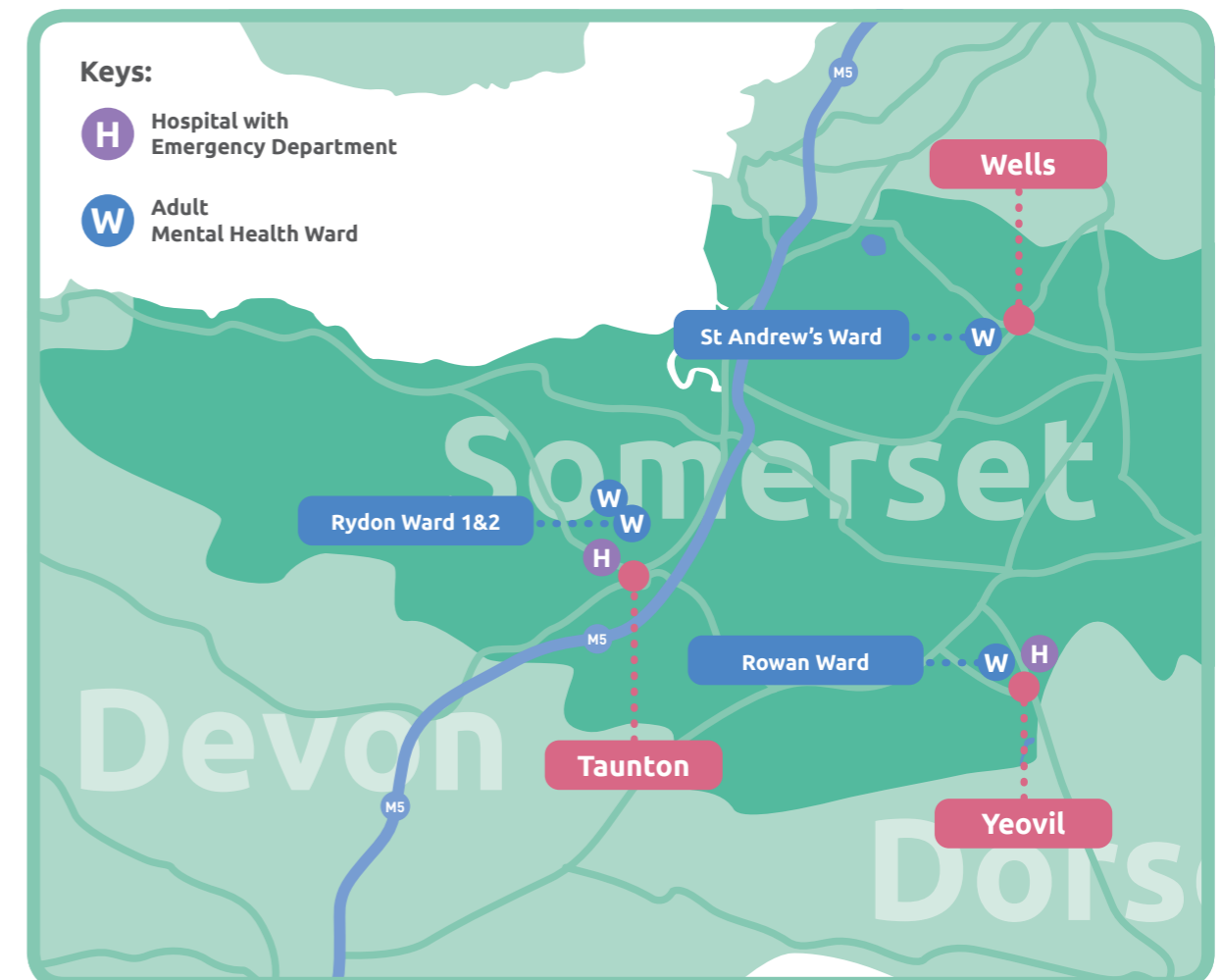
We are thinking about moving the mental health hospital in Wells to Yeovil. This means we would move the beds from Wells to make a bigger mental health hospital in Yeovil.

We will still have the same number of beds overall as we have now.

A mental health hospital is for patients who need to be kept safe and supported in a very difficult time. They are also called mental health inpatient wards.

At the moment there are four mental health wards in Somerset for people who are aged between 18 and 65. They are shown as blue on this map.

Two of the wards do not have any other wards nearby so they are on their own. We are thinking about moving one of these wards so there are two wards together at the same place.



We are thinking about moving one of the wards because:

1. The ward in Wells is too far from an Emergency Department (or A&E).

This means it can take too long for patients to see the right doctor or consultant quickly if they need urgent medical help.

2. Wards work better when they are together and staff can help each other out.

With two wards, staff can help each other if there is a problem. When there is only one ward, staff have to call the police for help.

3. There are not enough doctors to help at night and weekends in the Wells ward.

Doctors can do things that other staff can't do. They can prescribe strong medicines that help calm people down when they need it. Doctors are not always available in Wells but a doctor is on site at Yeovil all the time.

We think it would be better to have two wards in Yeovil instead of one ward in Yeovil and one ward in Wells.

Our consultation runs from 16 January to 12 April 2020.

We want to know what you think.

How can I tell you what I think?

You can call us:

01935 384119

You can fill out our questionnaire:

Which you can find at your doctor's surgery

You can write to us for free:

You don't need a stamp – write on your envelope

FREEPOST SOMERSET MH CONSULTATION

You can email us:

somccg.fitformyfuture@nhs.net

Meet us:

You can come to one of our drop-ins, all the dates and places are on our website

www.fitformyfuture.org.uk



Fit for my Future,
Somerset CCG,
Wynford House,
Lufton Way, Lufton,
Yeovil BA22 8HR

