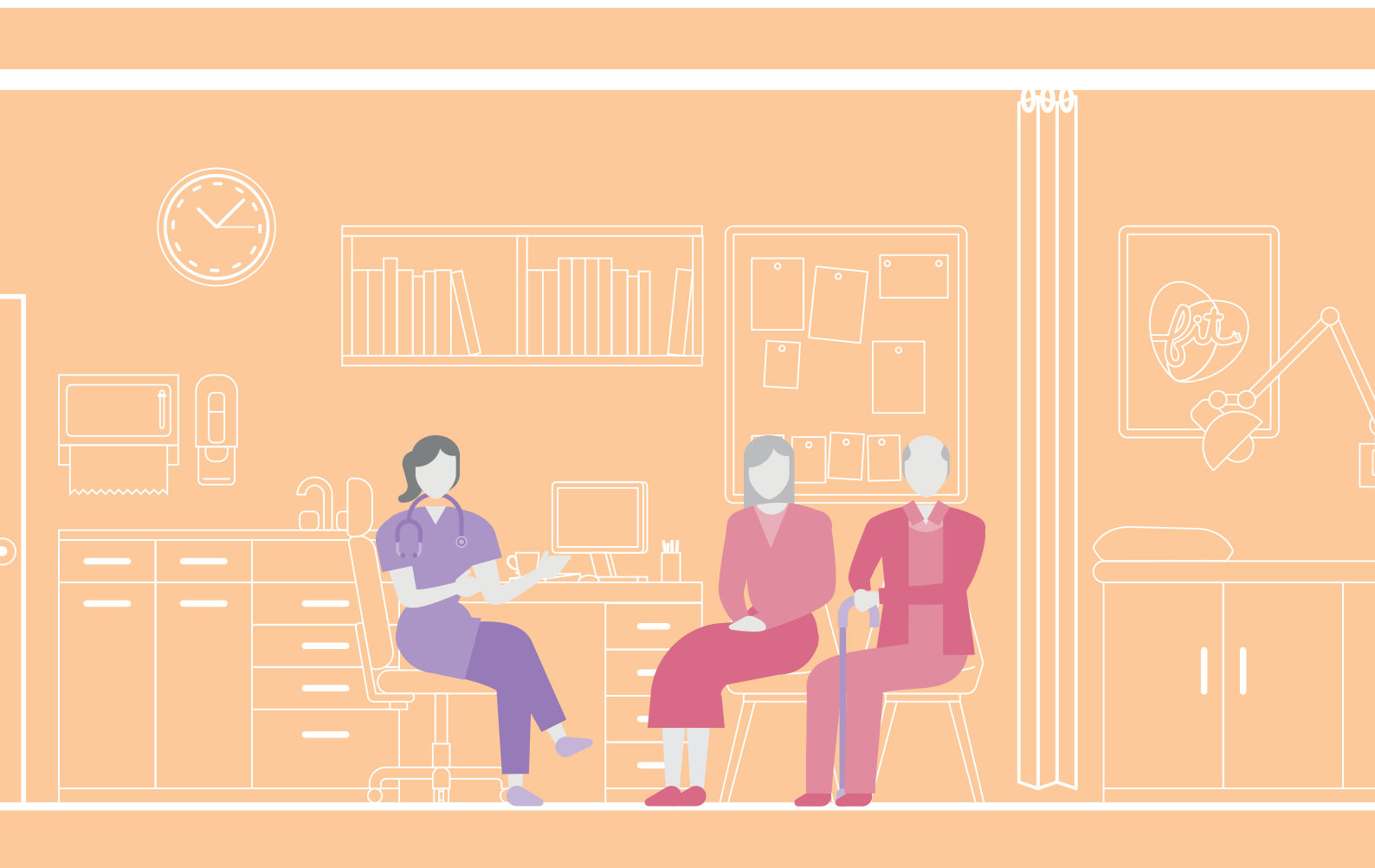


Engagement document

January 2020

# Thinking about Somerset's community health and care services



## Thinking about Somerset's community health and care services

---

We are thinking about how we can improve community health and care services in Somerset.

We are Somerset Clinical Commissioning Group. Our job is to buy and plan health services for the people of Somerset.

We want to support people to live independent, healthy lives.

To help us do this we need to have the right services in the right place when people need them. We need to have the right staff to work in the services.

This means that we are looking at:

- ▶ **how we use our community hospitals**
- ▶ **how we help people in the community**
- ▶ **how people get same day urgent care**

Same day urgent care means getting medical attention when you are ill or hurt and can't wait for an appointment at your doctors' surgery. It does not mean a life threatening or emergency illness or injury.

You will still be able to get the help you need, when you need it. How you get help and where you go for help may change in the future.

No decisions have been taken about any changes. We want you to help us get this right and tell us what you think.

Somerset has thirteen community hospitals and seven minor injury units.

## What we are thinking about:

### 1. We want to help people to stay well at home

By improving our community services and changing the way we provide these, we can support more people to stay at home.

### 2. We want to help people get home faster

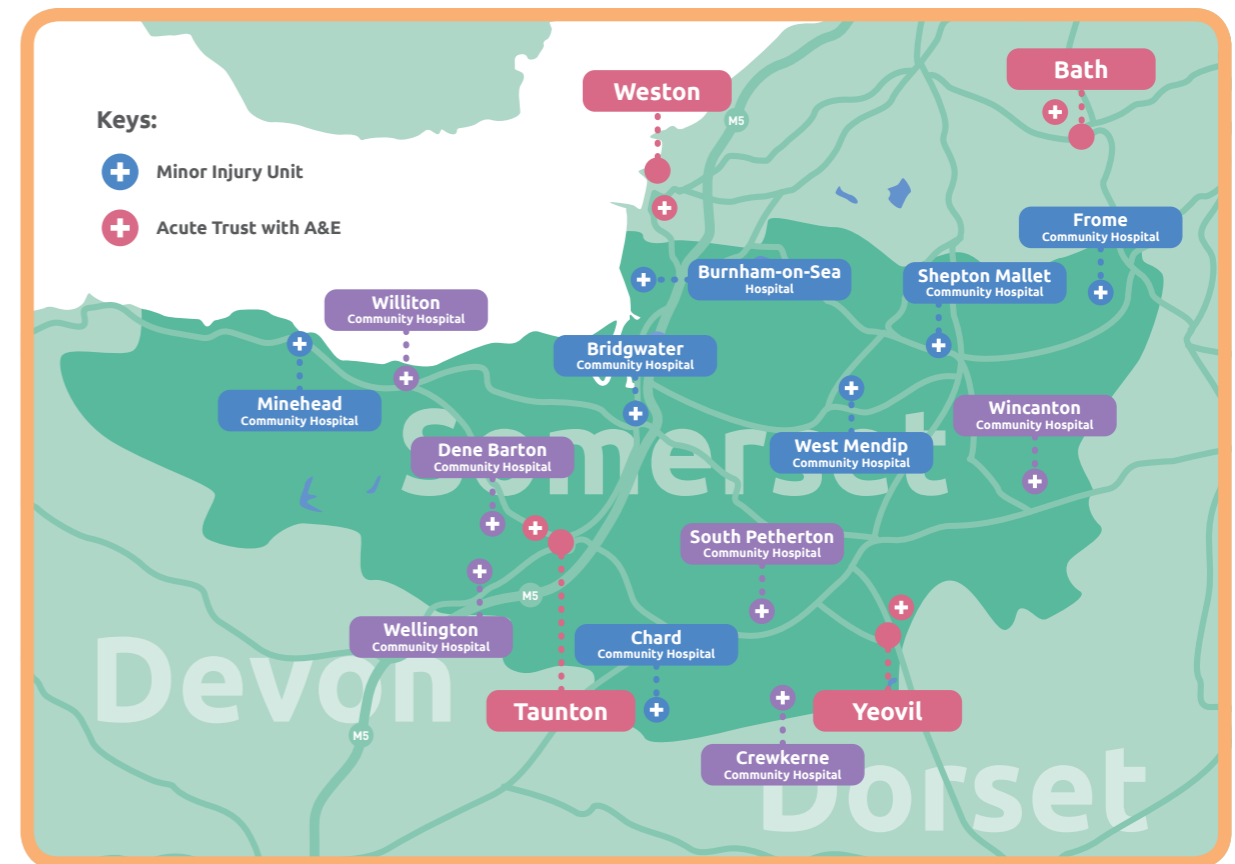
When people need care, we want to support them in their own home, with a short stay in a nursing or care home or in a hospital bed. We can also help people to return home sooner after a hospital stay.

### 3. We want to have the right health services in the right place

People tell us they are confused about who to contact and where to go when they are ill or hurt. This means that they often end up in hospital or at their doctors surgery when they could be seen faster somewhere else.

### 4. We want to support our staff

By changing our services we can help our staff and give them more choice about their jobs. This is better for doctors, nurses and everyone else who provides care and helps people to stay well. It will help us make sure we have the right staff in the right place when you need them.



We want you to have access to lots of community health and care services where you live. To do this, we need to make changes.

We want to know what you think is important for us to think about when planning services.

## How can I tell you what I think?

---

### Fill out our questionnaire:

Fill out our questionnaire which you can find at your doctor's surgery or on our website [www.fitformyfuture.org.uk](http://www.fitformyfuture.org.uk)

---

### Write to us for free:

You don't need a stamp – write on your envelope

**FREEPOST SOMERSET COMMUNITY  
ENGAGEMENT**

---

### Email us:

[somccg.fitformyfuture@nhs.net](mailto:somccg.fitformyfuture@nhs.net)

### Call us:

**01935 384119**

---

### Come to one of our drop-ins:

all the dates and places are on our website

[www.fitformyfuture.org.uk](http://www.fitformyfuture.org.uk)

## What happens next?

---

What you tell us will help us make a plan.

We will share our plan with you later this year and ask you what you think.



Fit for my Future,  
Somerset CCG,  
Wynford House,  
Lufton Way, Lufton,  
Yeovil BA22 8HR

